

TREATMENT OF MINOR BURNS

1 STOP THE BURNING PROCESS

Remove all clothing, diapers, jewelry, metal & restrictive garments

DO NOT place ice or cold water on burns

Obtain patient's medical history

Check tetanus status & give tetanus if last immunization was greater than 5 years

2 ABA CRITERIA FOR REFERRAL

The American Burn Association has identified the following injuries as requiring referral to a burn center after initial assessment and treatment:

1. Partial thickness burns >10% TBSA
2. Burns that involve the face, hands, feet, genitalia, perineum or major joints
3. Third degree burns in any age group
4. Electrical burns, including lightning injury
5. Chemical burns
6. Inhalation injury
7. Burn injury in patients with preexisting medical disorders that could complicate management, prolong recovery or affect mortality
8. Any patients with burns and concomitant trauma (such as fractures) in which the burn injury poses the greatest risk of morbidity or mortality
9. Burned children in hospitals without qualified personnel or equipment for the care of children
10. Burn injury in patients who require special social, emotional/long term rehabilitative intervention

For questions regarding a burn injury, regardless of size, please call **855-863-9595**



**JOSEPH M. STILL
BURN CENTERS, INC.**

3 DETERMINE DEPTH OF BURN INJURY

First degree burn: pink in color, no blisters, mild to moderate pain

Second degree burn: bright pink to red, blisters may be present, wet and weepy, blanches with capillary refill present, very painful. Always re-assess second degree burns for possible conversion to third degree burns.

Third degree burn: dry/tight/leathery, brown/tan/waxy or pearly white, no blanching or capillary refill, relatively pain free, may initially appear to be second degree, no blisters, needs skin grafting to heal

4 TREAT MINOR BURN WOUNDS

Medicate for pain prior to wound care

Remove all blisters and devitalized tissue

Clean the wound with an antibacterial soap & water

Apply an antibacterial ointment

Wrap the wound with a light gauze

For dressings or skin substitute options, please call the Burn Center at **855-863-9595**

Patients may follow up at our conveniently located clinic: 501 E Hampden Avenue

5 WATCH FOR DEVELOPMENT OF COMPLICATIONS

Infection to the burn wound

Localized Cellulitis

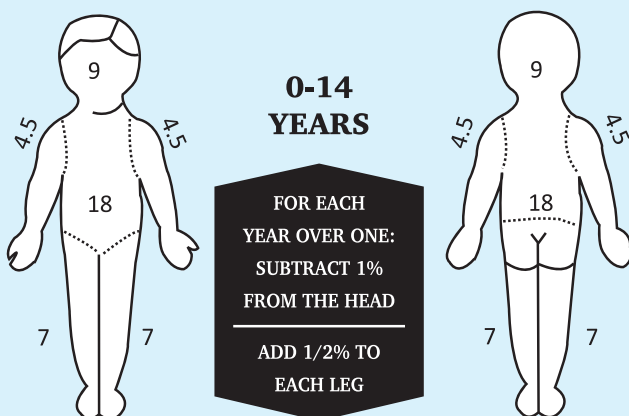
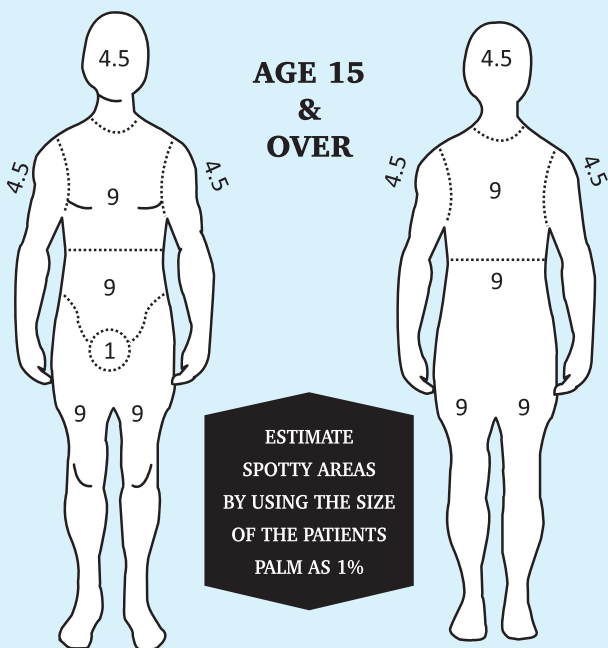
Fever, chills, or nausea

Development of Eschar

Lack of healing within a week

Uncontrollable pain

BODY SURFACE AREA IN PERCENT



FOR PATIENT REFERRALS: 855.863.9595 burncenters.com